
Manhattan / Riley County Preservation Alliance Newsletter

July, 2001

600 COLORADO

New Life for Old Public Square

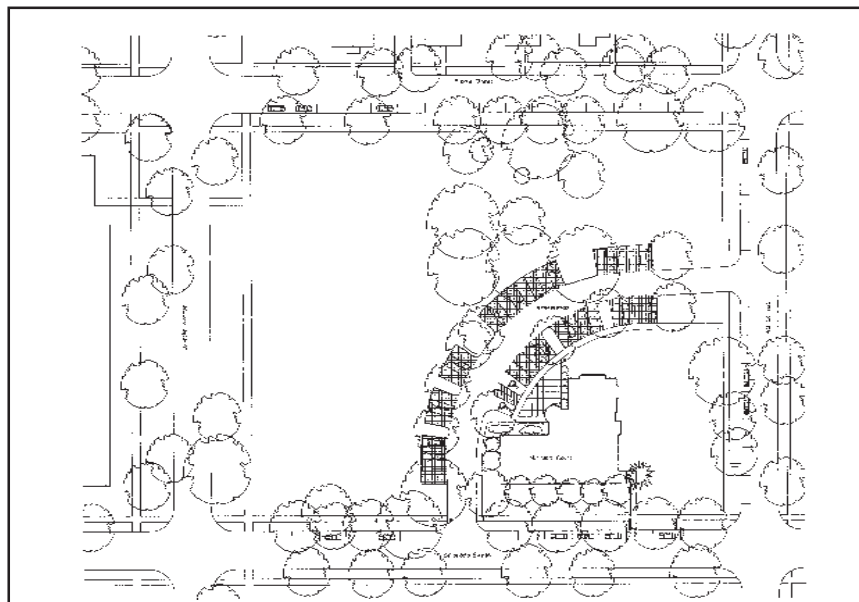
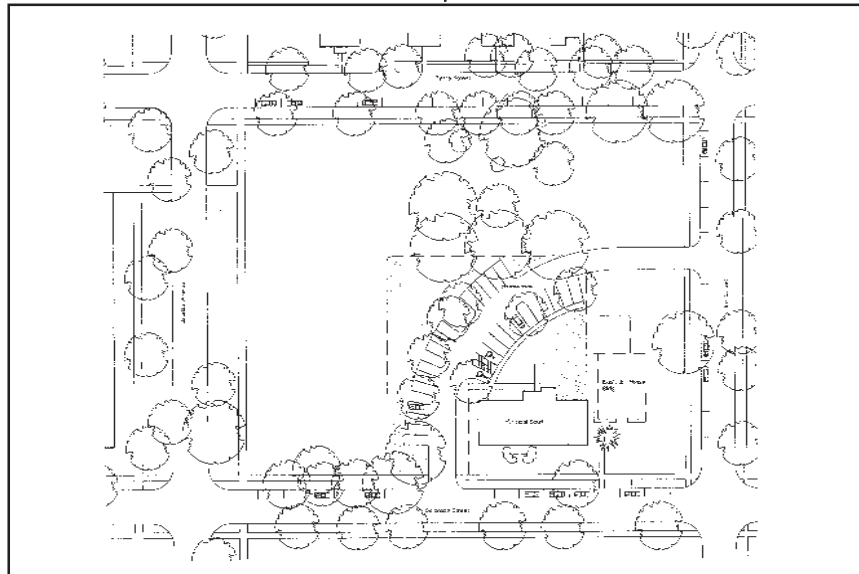
A city block of land bordered by Pierre Street on the north, 6th Street on the east, Colorado Street on the south, and Juliette Avenue on the west was dedicated in 1857 by our pioneer forefathers as Manhattan's Public Square. However, when in the early history of our town the City Hall was built on Poyntz Street instead, a jail was built on that land, and there a jail has remained, until the year 2001, when the jail and all law enforcement facilities moved to the new city/county Law Enforcement Center on Seth Child Road.

Citizens of Manhattan have been polled on what they felt should be done with the now vacant property, and with those ideas in mind, Brent

Bowman and Associates was selected through an interview process as the firm to develop those ideas for the site. Below are the firm's initial proposals for future use. Phase 1 shows what

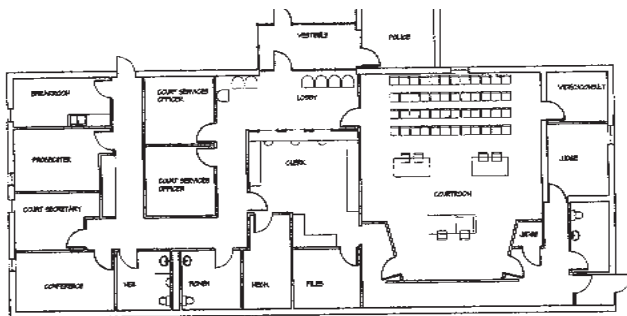
could be done immediately, by converting the old police building to municipal court facilities; and Phase 2 illustrates a more comprehensive plan, which includes removal of the old jail (solidly built in the early '40s), and the inclusion of an additional courtroom to the original building.

These plans will be presented to the City Commission on July 17, 7p.m. in the City Commission Room of City Hall. Interested citizens are encouraged to attend and participate at that meeting. See next page for interior plans.

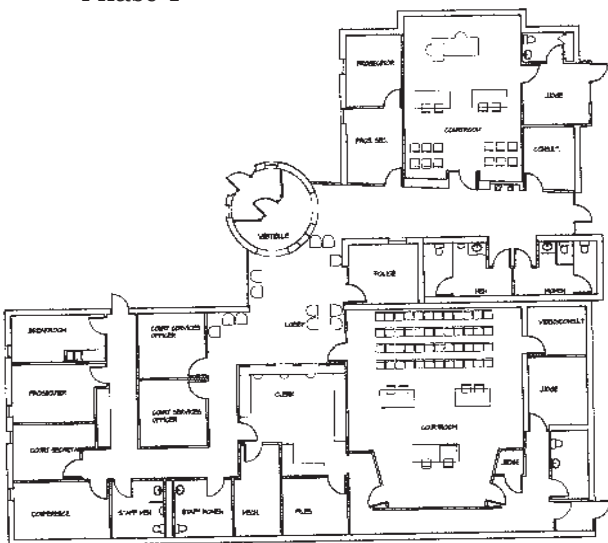


**Interior Views of a Proposed
New Municipal Court Building**

The plans below illustrate the architect's view of how a Municipal Court could be placed in the old building which used to serve as police headquarters. The budget is sparse—\$300,000. Phase 1 (the top illustration) could probably be built for that amount. Phase 2, below, would take a little longer. In terms of landscaping the surrounding area, further funds would have to be made available somewhere down the road.



Phase 1



Phase 2

TOUR OF THE STONE HOUSE

Next month's newsletter will feature the Stone House, the pride of the Department of Human Ecology. This childhood education center, built with private funds, is a glowing new jewel on the Kansas State campus. Many PA members participated in the tour last month. Our thanks go to Dean Carol Kellett, Development Director Tresa Weaver, and Barbara Anderson, historian par excellence, for their enthusiastic presentation.

HOLIDAY HISTORIC HOMES TOUR COMMITTEE MEETS

On July 2, 2001, the Homes Tour Coordinating Committee held its first meeting. Edna Williams and Cheryl Collins are the coordinators. Corina Hugo, Georganne White and Linda Glasgow were also present as this major effort gets under way. The tours are set for December 7-8. Research on the selected homes is to be completed by the end of August. The ticket text, and all advertising and sponsor commitment, must be completed by the end of September so that the ticket books can be produced by the end of October. They should be on sale by early November. Does this sound like a lot of hard work? You betcha!! Is it worth it? Absolutely!! Volunteer to join in the fun.

**APPOINTMENTS MADE TO COMPREHENSIVE
LAND USE PLAN ADVISORY COMMITTEE**

Appointments have recently been made to the CLUP Advisory Committee. These people will work closely with the consultant during the Plan's development.

Appointed by the County Commission:

County Commissioners:

- Bob Newsome
- Al Johnson

Riley County Planning Board:

- Lorne Clement

Business Community-Realtor:

- John Roberts

Natural Resource Management-Agricultural:

- John Howe

Neighborhood—Social—Cultural:

- Alan Ladd

Citizens at Large:

- Terry Olsen
- David Moranville

Appointed by the City:

KSU Representative:

- Jackie McClaskey

Pottawatomie County:

- Gail McConnaughey


Fort Riley:

- Julie Poyser (with David Scruggs
or Keith Jevons as alternates)

City Commissioners:

- Bruce Snead
- Ed Klimek

Manhattan Urban Area Planning Board:
 Mike Hill
 Gwyn Riffel
 Business Community - Developer:
 Calvin Emig
 Natural Resource Management - Environment:
 Janet Throne
 Neighborhood - Social - Cultural:
 David MacFarland
 Citizens at Large:
 Ron Sampson
 Verne Deines
 Connie Hamilton
 Tom Hawk (awaiting confirmation)



Candlehouse Ltd., USA

Tracy F. Perrotta

phone/fax
 785-587-8558
 candlhse@interkan.net
 www.candlehouse.net

Advertising costs \$5/month for a business card sized ad. If you know anyone else who would like to help support the M/RCPA newsletter, please let us know.

Claflin Books and Copies



Stormy Lee Kennedy

1814 Claflin Road
 Manhattan, KS 66502
 (785) 776-3771
 Fax: (785) 776-1009

claflin@interkan.net

WHERE IS THIS HOUSE?



In 1931, according to the Royal Purple, this was the Kappa Sigma house. Does anyone know the address? No answers were forthcoming on the TKE house featured last month. All answers will be printed, and credit given.

BORST RESTORATION

Residential Preservation, Renovation & Improvement
 Structural Repair Services

Serving Our Community For Over 20 Years

Mel and Jan Borst 1918 Humboldt
 (785) 776-1460 Manhattan, KS 66502

Member of the National Trust for Historic Preservation

KEMPTHORNE

Painters & Paperhangers
 — since 1979 —



June Kempthorne

3591 Letter Rock Rd.
 Manhattan, KS 66502
 785-539-7344

PRIDE PROPERTIES presents
Mom's Boys

Handyman Service
 Expert Decorating
 & Creative Problem Solving



Steven Mull 1115 Colorado St.
 Manhattan, KS 66502
 Cell Phone: 785-313-2394

Free estimates and quality work

MANHATTAN/RILEY COUNTY PRESERVATION ALLIANCE, INC.

Next Meeting:

Thursday, July 12, 7:30 p.m., First Congregational Church at Poyntz and Juliette. No tour is scheduled. Don't let that deter you! ★ The Holiday Historic Homes Tour is fast approaching, the committee has had its initial meeting, and plans must be implemented. ★ Work has already begun on the Depot—we need an update. ★ And the new Comprehensive Land Use Plan demands our attention, and our active participation.

MEMBERSHIP INFORMATION FOR MANHATTAN/RILEY COUNTY PRESERVATION ALLIANCE, INC.

Dues date from the Annual Meeting in September. Dues paid mid-year confer membership status until the next Annual Meeting. Dues are \$15 for an individual and \$20 for a family. Checks should be made out to the Manhattan/Riley County Preservation Alliance, Inc. c/o P.O. Box 1893, Manhattan, Kansas 66505. Questions? Call Linda Glasgow at 785-565-6490.

If anyone has news to put in future M/RCPA newsletters, please contact the Editor, Marolyn Caldwell, at 776-4862, or email marolync@flinthills.com.

NEXT MEETING: JULY 12, 7:30 PM

M/RCPA
The Riley Co. Historical Society
2309 Claflin Road
Manhattan, KS 66502